



## 2 Moorside

Fulwood, Sheffield,  
S10 4LN



# 2 Moorside

A STUNNING FIVE BEDROOM FOUR BATHROOM FAMILY HOME

Superbly situated among a select collection of homes that mirror its own refinement, this impressive residence is defined by its seamless connection to the fields. The property takes full advantage of its elevated setting to capture the very essence of the Mayfield Valley. A spacious dwelling of five bedrooms and four bathrooms, it is framed by exquisite gardens that provide a serene sanctuary, bordering the open meadows of this sought-after rural retreat.





# KEY FEATURES

---

- Five Double Bedrooms
- Four Bathrooms
- Peaceful Picturesque Setting
- Many Local Walks & Cycle Trails On The Doorstep
- Close To Local Amenities
- Off Road Parking For Several Vehicles
- High Finish Throughout
- Beautiful Landscaped Gardens





# GROUND & LOWER FLOOR

---

Step through the inviting entrance hall into a generous living area where a crackling fireplace creates a cozy retreat, complemented by a handy workspace.

The heart of this residence is the exquisite open-plan kitchen, blending rustic country charm with modern integrated appliances.

Beyond the functional laundry lies a tranquil sunroom, while downstairs, the ultimate entertainment hub awaits: a luxurious cinema room and a stylish drinks bar





# FIRST FLOOR

---

Ascending to the first floor, the home reveals further delights. The primary bedroom is a standout suite, blending timeless charm with practical fitted wardrobes and a superb, modern en suite. Two further spacious double bedrooms ensure plenty of room for all, one of which benefitting from its own en suite. While the family bathroom has been crafted as a tranquil retreat, featuring high-end finishes and a calming design palette



# SECOND FLOOR

---

Continuing up to the second floor, you will find two further generously sized double bedrooms. Each room enjoys elevated vistas of the surrounding valley, ensuring a sense of peace and scale, while the family bathroom is conveniently located to serve both.

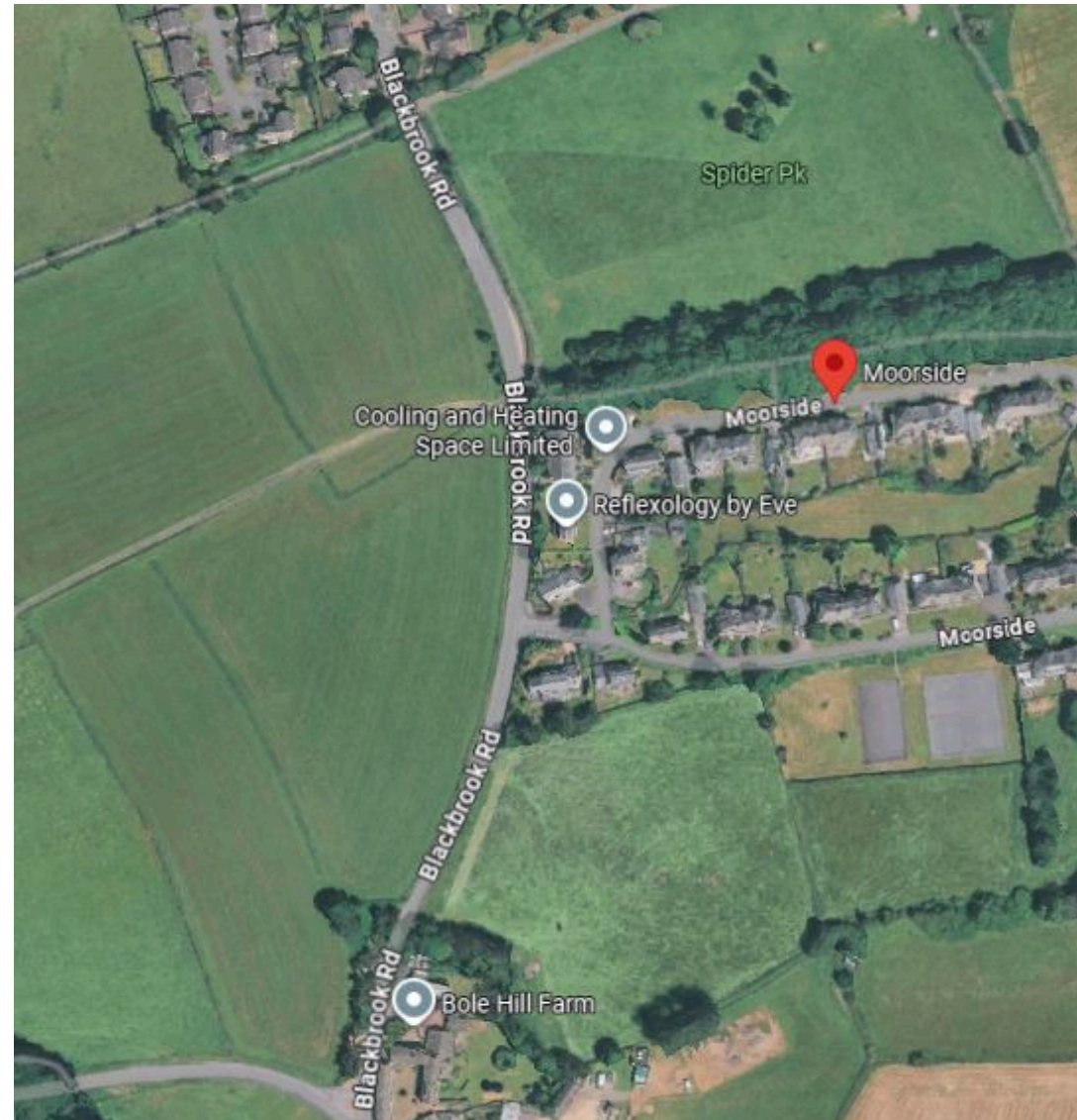


# LOCATION

---

Located on the western edge of Sheffield, this home sits in the heart of Fulwood—one of the city's most sought-after leafy suburbs. It offers a rare "best of both worlds" lifestyle, where quiet, established streets meet the gateway to the Peak District National Park. Residents enjoy a peaceful, semi-rural feel while remaining just a short commute from the vibrant city center.

As part of the prestigious S10 area, the neighborhood is known for its safety, charm, and high-quality architecture, making it a top choice for families and professionals alike. With Redmires Road nearby, you have a direct link to the Great Outdoors or a quick route into town. For daily essentials, the charming cafes and local shops of Fulwood Village and Crosspool are just moments away.



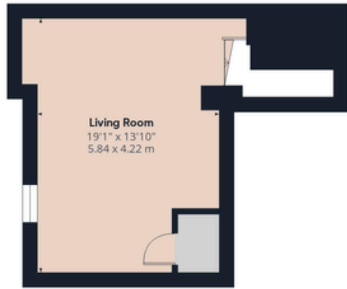
# Gardens

---

The gardens are a true highlight, richly planted and thoughtfully arranged to create distinct areas, including a large front patio, an allotment style space with raised beds, a tranquil tree lined seating area, and a private rear terrace.

An additional double garage provides excellent storage.





Ground Floor



Floor 1

Approximate total area<sup>(1)</sup>

2839 ft<sup>2</sup>

264 m<sup>2</sup>

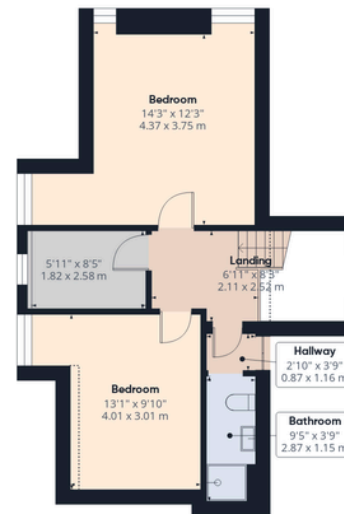
Reduced headroom

6 ft<sup>2</sup>

0.5 m<sup>2</sup>



Floor 2



Floor 3



(1) Excluding balconies and terraces

Reduced headroom

..... Below 5 ft/1.5 m

Calculations reference the RICS IPMS 3C standard. Measurements are approximate and not to scale. This floor plan is intended for illustration only.



For further information  
please contact James Morriss on  
07711993142  
alternatively email  
[james.morriss@saxtonmee.co.uk](mailto:james.morriss@saxtonmee.co.uk)

---

While we endeavour to make our sales particulars fair, accurate and reliable, they are only a general guide to the property and, accordingly, if there is any point, which is of particular importance to you, please contact the relevant office. SERVICES: The Agents have not tested any apparatus, equipment, fittings or services and so cannot verify they are in working order. The buyer is advised to obtain verification. MEASUREMENTS: Please note all the measurement details are approximate and should not be relied upon as exact. FLOORPLANS; Plans are for guidance purposes only and under no circumstances should they be relied upon for use in planning carpets and other such fixtures, fittings or furnishings.